

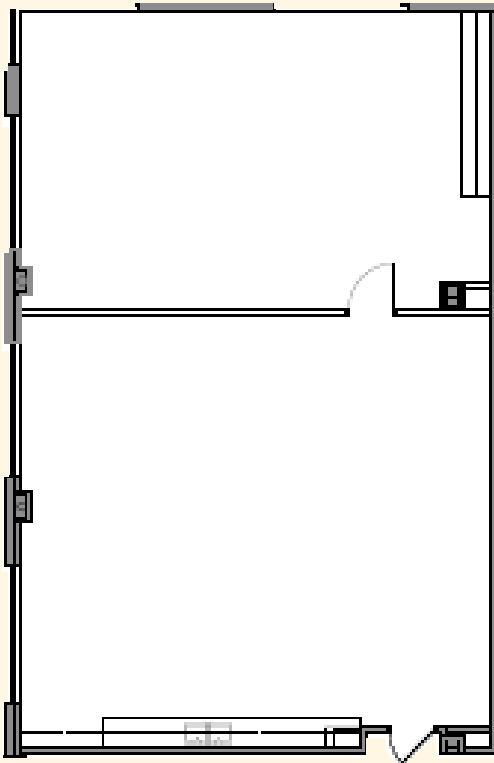
WESTLAKE CORPORATE CENTER I

9119 CORPORATE LAKE DRIVE, TAMPA, FLORIDA 33634



SUITE 180

- 1,839 RENTABLE SQUARE FEET
- \$ 23.00 / RSF FULL SERVICE
- DESIGNED AS CORPORATE KITCHEN AND WORK OUT FACILITY
- UPGRADED FLOORING: HARDWOOD AND RUBBER MATTING
- BEAUTIFUL LAKE VIEW



OSPREY REAL ESTATE SERVICES
A MEMBER OF THE OSPREY FAMILY OF COMPANIES

REAL ESTATE
MANAGEMENT
INVESTMENT
RECREATION

WENDY GIFFIN / CATHY STERRETT
727.894.2525
WWW.OSPREYNORTHBAY.COM

NO WARRANTY OF REPRESENTATION, EXPRESSED OR IMPLIED, IS MADE TO THE ACCURACY OF INFORMATION CONTAINED HEREIN, AND SAME IS SUBMITTED SUBJECT TO ERRORS, CHANGE OF PRICE, RENTAL OR OTHER CONDITIONS, WITHDRAWAL WITHOUT NOTICE, AND TO ANY SPECIAL LISTING CONDITIONS, IMPOSED BY OUR PRINCIPALS.