

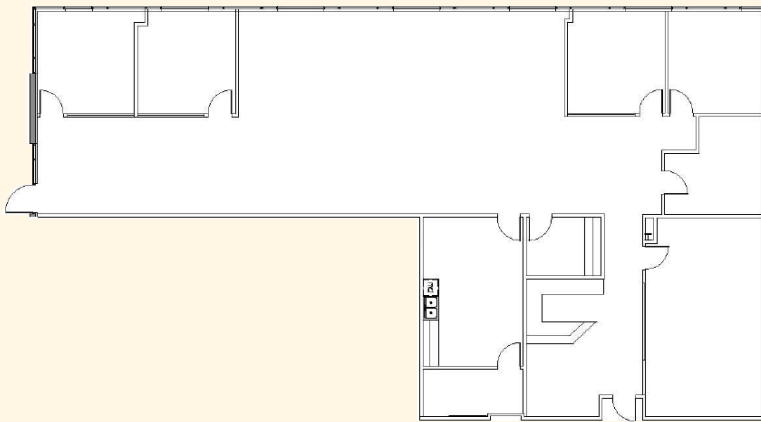
WESTLAKE CORPORATE CENTER II

9009 CORPORATE LAKE DRIVE, TAMPA, FLORIDA 33634



SUITE 165

- 4,047 RENTABLE SQUARE FEET
- \$ 23.00 / RSF FULL SERVICE
- 4 EXECUTIVE OFFICES WITH WINDOWS
- LARGE CONFERENCE ROOM
- KITCHEN / STORAGE
- OPEN SPACE FOR WORKSTATIONS



WENDY GIFFIN / CATHY STERRETT

727.894.2525

WWW.OSPREYNORTHBAY.COM



OSPREY REAL ESTATE SERVICES

A MEMBER OF THE OSPREY FAMILY OF COMPANIES

REAL ESTATE
MANAGEMENT
INVESTMENT
RECREATION

NO WARRANTY OF REPRESENTATION, EXPRESSED OR IMPLIED, IS MADE TO THE ACCURACY OF INFORMATION CONTAINED HEREIN, AND SAME IS SUBMITTED SUBJECT TO ERRORS, CHANGE OF PRICE, RENTAL OR OTHER CONDITIONS, WITHDRAWAL WITHOUT NOTICE, AND TO ANY SPECIAL LISTING CONDITIONS, IMPOSED BY OUR PRINCIPALS.