

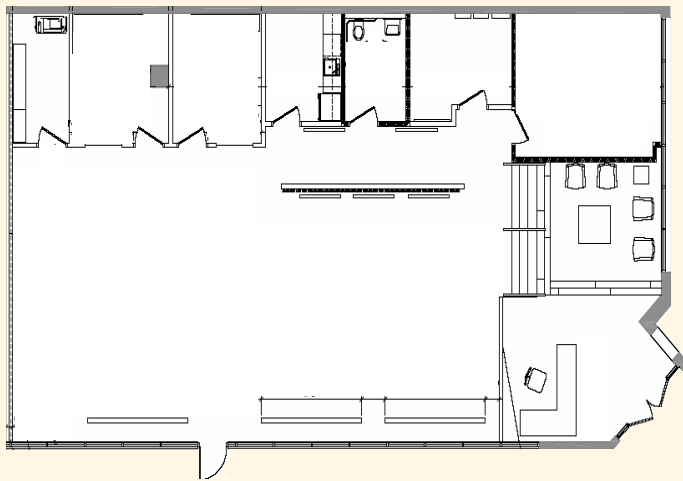
FIRST CENTRAL TOWER

360 CENTRAL AVENUE, ST. PETERSBURG, FLORIDA 33701



320 CENTRAL AVENUE

- 2,833 RENTABLE SQUARE FEET
- \$20.00 / RSF MODIFIED GROSS PROMOTIONAL RATE
- "AS-IS" MOVE-IN CONDITION
- HIGH END FINISHES
- EXCELLENT VISIBILITY
- KITCHEN
- INTERIOR OFFICES
- STREET FRONT VISIBILITY
- 51 FEET OF CENTRAL AVENUE FRONTAGE
- SIGNAGE ON CENTRAL AVENUE



OSPREY REAL ESTATE SERVICES
A MEMBER OF THE OSPREY FAMILY OF COMPANIES

REAL ESTATE
MANAGEMENT
INVESTMENT
RECREATION

WENDY GIFFIN / CATHY STERRETT
727.894.2525
WWW.OSPREYNORTHBAY.COM

NO WARRANTY OF REPRESENTATION, EXPRESSED OR IMPLIED, IS MADE TO THE ACCURACY OF INFORMATION CONTAINED HEREIN, AND SAME IS SUBMITTED SUBJECT TO ERRORS, CHANGE OF PRICE, RENTAL, OR OTHER CONDITIONS, WITHDRAWAL WITHOUT NOTICE, AND TO ANY SPECIAL LISTING CONDITIONS, IMPOSED BY OUR PRINCIPALS.