

DOWNTOWN ST. PETERSBURG BANK DRIVE-THRU FOR LEASE



344 1ST AVENUE SOUTH
ST. PETERSBURG, FL 33701



OSPREY
REAL ESTATE SERVICES
NORTH BAY, LLC

(727) 894-2525

360 CENTRAL AVENUE
ST. PETERSBURG, FL 33701
FAX: (727) 499-7390
WEB: WWW.OSPREYNORTHBAY.COM



Downtown St. Petersburg



344 1ST AVENUE SOUTH
ST. PETERSBURG, FL 33701



OSPREY
REAL ESTATE SERVICES
NORTH BAY, LLC

Rare Opportunity

- Existing drive-thru with walk-up window
- 3 Lanes and freestanding ATM
- 5 parking places
- Large pylon signage facing traffic
- Excellent visibility and accessibility
- In the heart of downtown St. Petersburg
- Expansion possible walk-up branch
- Fully operational
- Immediate availability

For Lease: \$4,200/mo NNN

FOR ADDITIONAL INFORMATION CONTACT:

PAULA CLAIR SMITH, CCIM

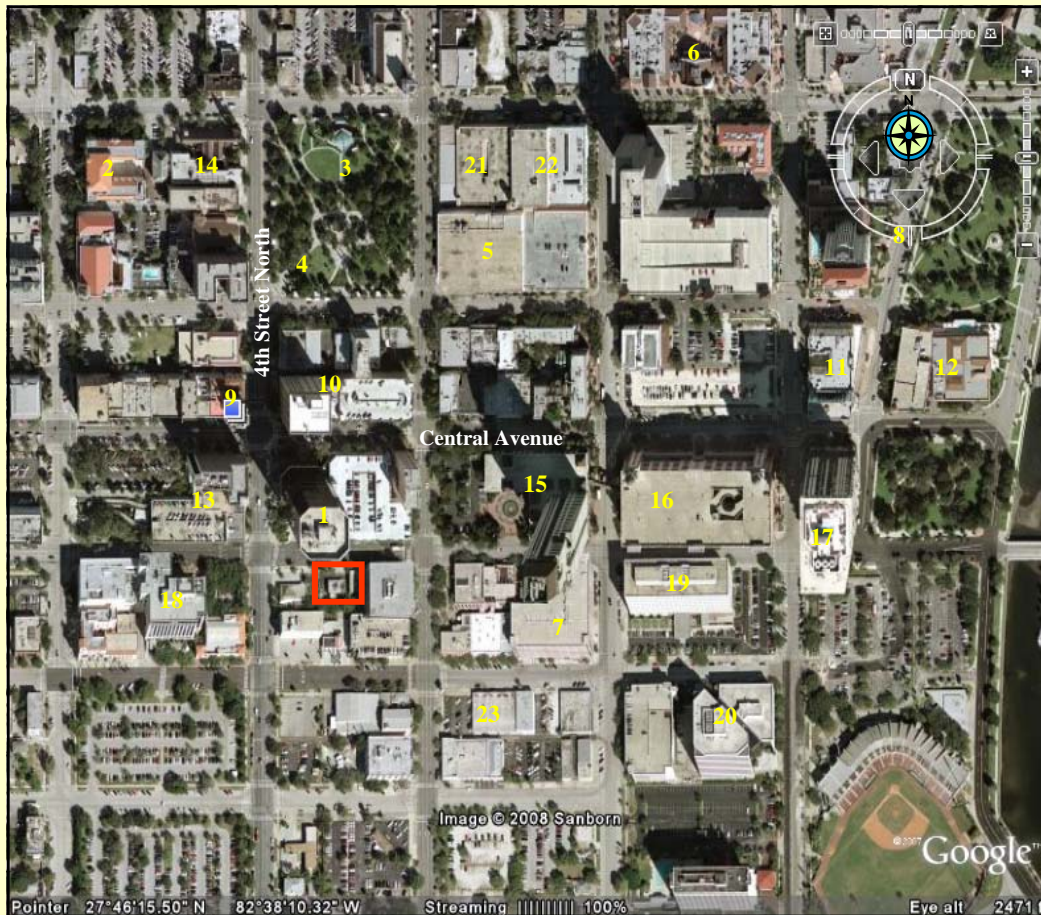
LICENSED REAL ESTATE BROKER

(727) 409-5539 (CELL)


(727) 499-7390 (FAX)

PSMITH@OSPREYRES.COM

WINNER OF 2009
REGIONAL DEAL OF YEAR



KEY

 = SITE

1. First Central Tower
2. City Hall
3. Williams Park
4. PSTA Hub
5. Progress Energy
6. Baywalk
7. McNulty Lofts
8. Beach Drive Retail
9. U.S. Post Office
10. Municipal Services Center
11. Hampton Inn
12. St. Petersburg Yacht Club
13. Wachovia Parking
14. St. Peter's Cathedral
15. Bank of America Tower
16. 100 Bay Central
17. Bayfront Tower
18. St. Petersburg Times
19. Signature Condos
20. City Center
21. American Stage
22. St. Petersburg College
23. Publix

ANY INFORMATION GIVEN HEREIN IS OBTAINED FROM SOURCES CONSIDERED RELIABLE. BROKER IS NOT RESPONSIBLE FOR MISSTATEMENT OF FACTS, ERRORS, OMISSIONS, PRIOR SALE, WITHDRAWAL FROM THE MARKET, MODIFICATION OF MORTGAGE COMMITMENT, TERMS AND CONSIDERATIONS OR CHANGES IN PRICE WITHOUT NOTICE. THE INFORMATION SUPPLIED HEREIN IS FOR INFORMATIONAL PURPOSES ONLY AND SHALL NOT CONTAIN A WARRANTY OR ASSURANCE THAT INFORMATION IS CORRECT. ANY PERSON INTENDING TO RELY UPON THE INFORMATION HEREIN SHOULD VERIFY SAID INFORMATION INDEPENDENTLY.