

DOWNTOWN STREET LEVEL OFFICE OR RETAIL SPACE FOR LEASE



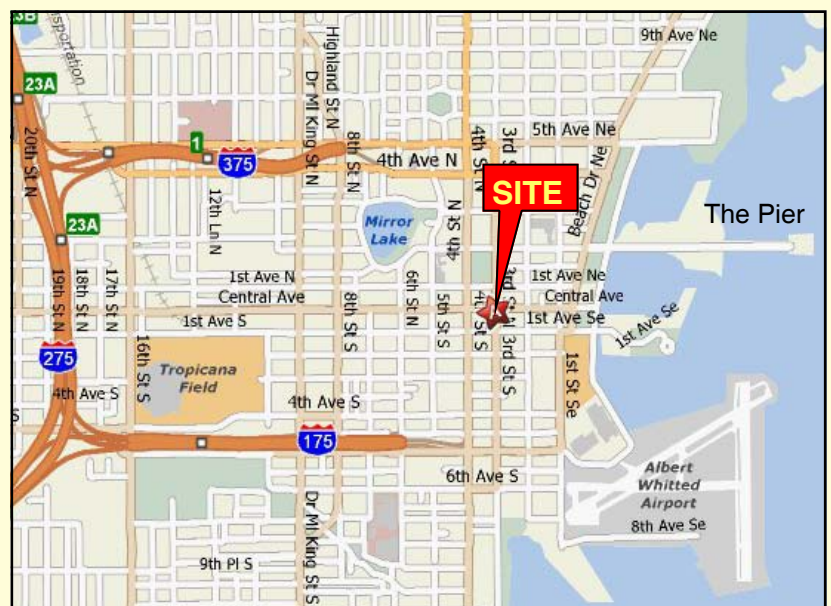
FIRST CENTRAL TOWER 2,833 SQUARE FEET

320 CENTRAL AVENUE
ST. PETERSBURG, FL 33701

 **OSPREY**
REAL ESTATE SERVICES
NORTH BAY, LLC

(727) 894-2525

360 CENTRAL AVENUE, SUITE 650
ST. PETERSBURG, FL 33701
FAX: (727) 898-1010
WWW.OSPREYNORTHBAY.COM



Downtown St. Petersburg

320 CENTRAL AVENUE
ST. PETERSBURG, FL 33701

**Downtown Central Business District
Office, Retail, or Restuarant Location**



OSPREY
REAL ESTATE SERVICES
NORTH BAY, LLC

- 320 Central: 2,833 usf, beautifully appointed former condo sales facility, \$20.00/rsf MG
- Adjacent to First Central Tower, a Class A office high-rise containing 245,328 sf
- On Central Avenue, in the heart of downtown St. Petersburg
- Excellent visibility with signage opportunities
- Traffic count of over 12,000 vehicles per day
- Central Avenue frontage, 45 foot depth and 12 foot ceiling heights

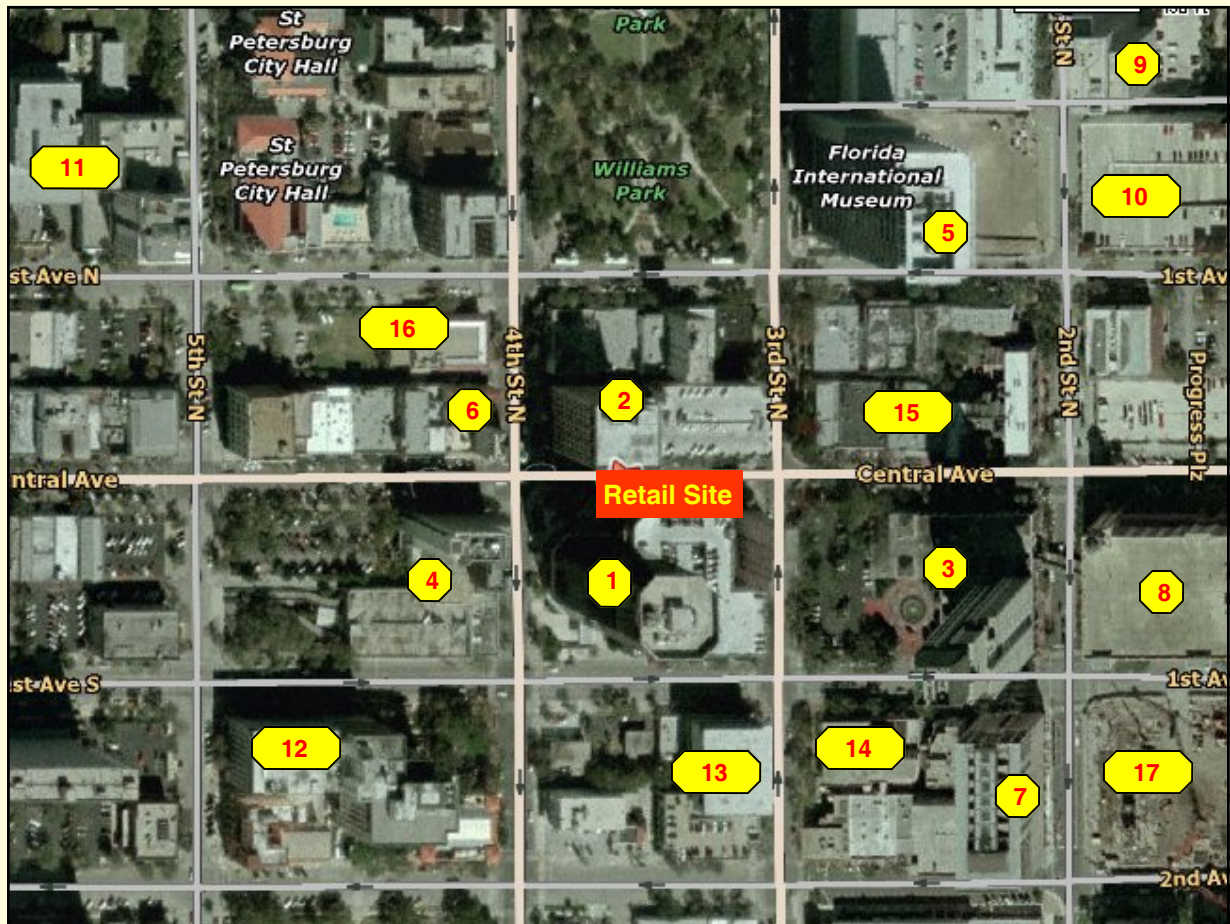
FOR ADDITIONAL INFORMATION CONTACT:

CATHY STERRETT
COMMERCIAL LEASING ASSOCIATE
(727) 894-2525

CSTERRETT@OSPREYRES.COM
WWW.OSPREYNORTHBAY.COM

MAP KEY

- | | |
|---|---------------------------|
| 1 - First Central Tower | 10 - BayWalk Garage |
| 2 - Municipal Office Bldg | 11 - St Pete Courthouse |
| 3 - Bank of America Tower | 12 - St. Pete Times Bldg |
| 4 - Old Wachovia Bank Bldg | 13 - Sun Trust Building |
| 5 - Progress Energy Center | 14 - McNulty Block |
| 6 - Snell Arcade Condos | 15 - Jannus Landing |
| 7 - McNulty Lofts and
Parking Garage | 16 - Open Air Post Office |
| 8 - 100 Bay Central | 17 - Signature Place |
| 9 - Wachovia Tower | |



ANY INFORMATION GIVEN HEREIN IS OBTAINED FROM SOURCES CONSIDERED RELIABLE. BROKER IS NOT RESPONSIBLE FOR MISSTATEMENT OF FACTS, ERRORS, OMISSIONS, PRIOR SALE, WITHDRAWAL FROM THE MARKET, MODIFICATION OF MORTGAGE COMMITMENT, TERMS AND CONSIDERATIONS OR CHANGES IN PRICE WITHOUT NOTICE. THE INFORMATION SUPPLIED HEREIN IS FOR INFORMATIONAL PURPOSES ONLY AND SHALL NOT CONTAIN A WARRANTY OR ASSURANCE THAT INFORMATION IS CORRECT. ANY PERSON INTENDING TO RELY UPON THE INFORMATION HEREIN SHOULD VERIFY SAID INFORMATION INDEPENDENTLY.

