

INDUSTRIAL/WAREHOUSE SPACE FOR LEASE



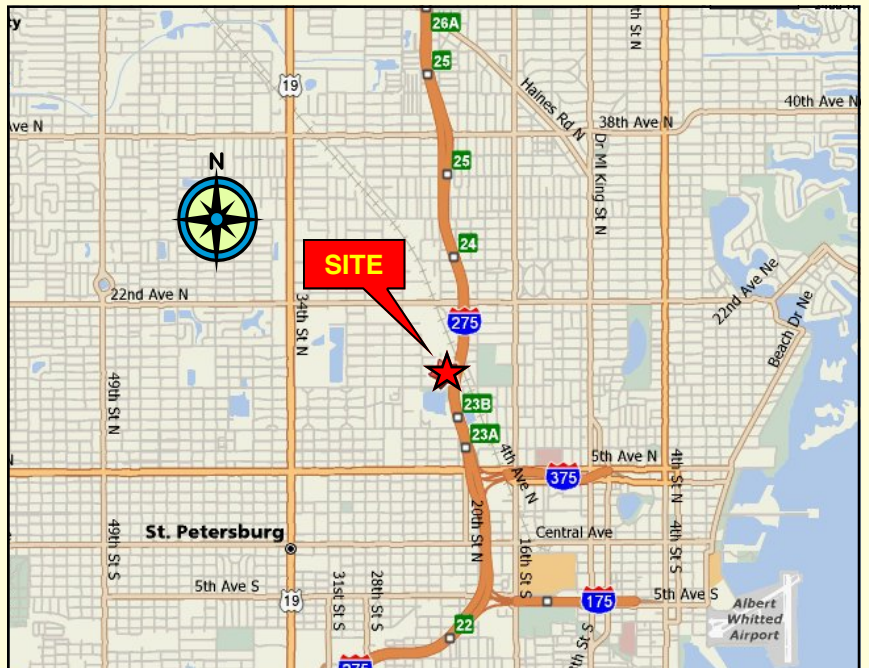
2155 14TH CIRCLE NORTH
ST. PETERSBURG, FL 33713



OSPREY
REAL ESTATE SERVICES
NORTH BAY, LLC

(727) 894-2525

360 CENTRAL AVENUE, SUITE 1230
ST. PETERSBURG, FL 33701
FAX: (727) 898-1010
WEB: WWW.OSPREYNORTHBAY.COM



St. Petersburg



2155 14TH CIRCLE NORTH
ST. PETERSBURG, FL 33713

LEASE RATE: \$6.00 SF



OSPREY
REAL ESTATE SERVICES
NORTH BAY, LLC

- Former Sound Advice warehouse
- 12,500 sf
- Visible from I-275
- Well maintained insulated metal building
- 1400 sf office
- Excellent loading for both dock high and van height
- Ample parking

FOR ADDITIONAL INFORMATION CONTACT:

ANN WALTERS

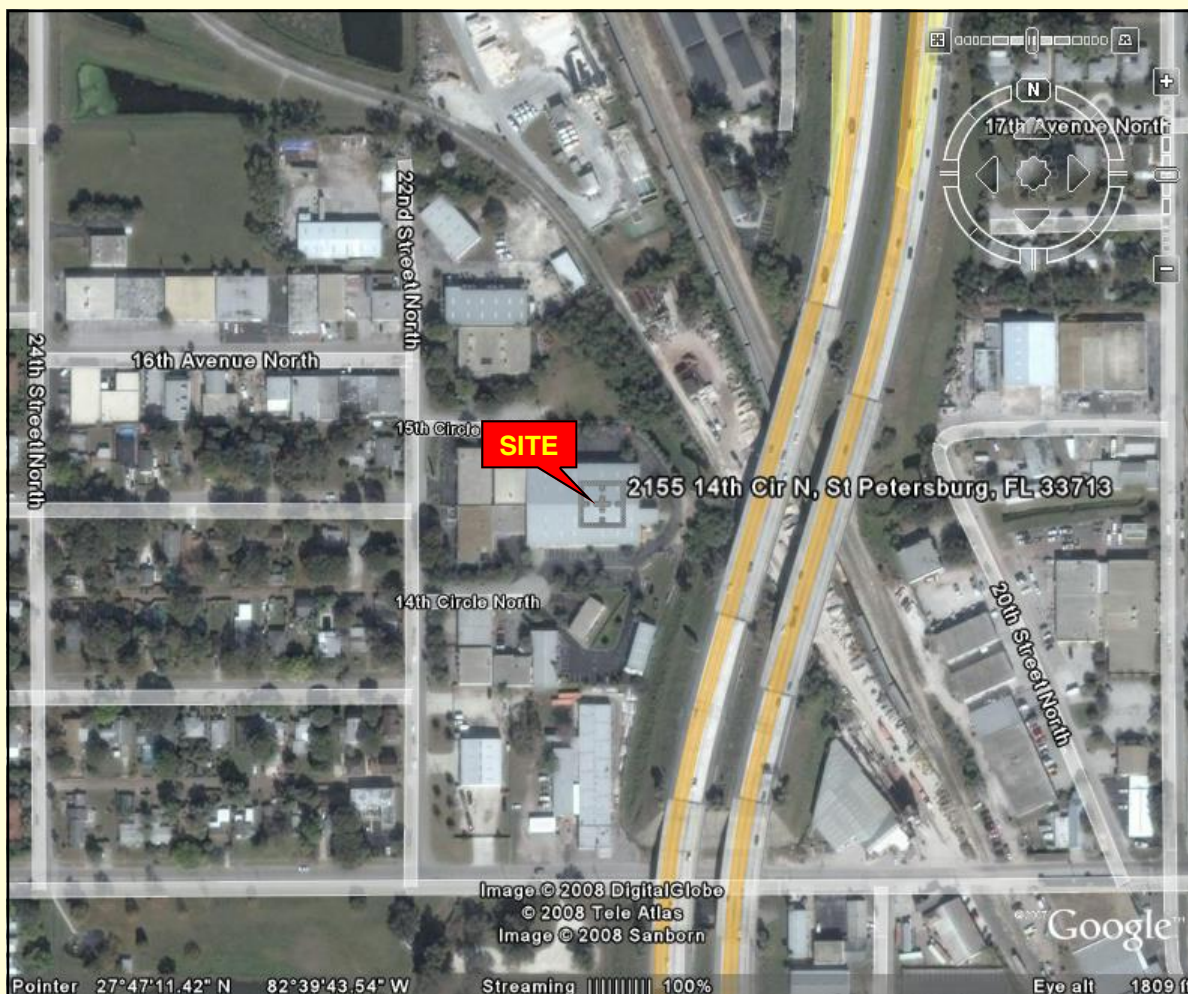
COMMERCIAL ASSOCIATE

(727) 894-2525

(727) 560-1285 (CELL)

AWALTERS@OSPREYRES.COM

WWW.OSPREYNORTHBAY.COM



ANY INFORMATION GIVEN HEREIN IS OBTAINED FROM SOURCES CONSIDERED RELIABLE. BROKER IS NOT RESPONSIBLE FOR MISSTATEMENT OF FACTS, ERRORS, OMISSIONS, PRIOR SALE, WITHDRAWAL FROM THE MARKET, MODIFICATION OF MORTGAGE COMMITMENT, TERMS AND CONSIDERATIONS OR CHANGES IN PRICE WITHOUT NOTICE. THE INFORMATION SUPPLIED HEREIN IS FOR INFORMATIONAL PURPOSES ONLY AND SHALL NOT CONTAIN A WARRANTY OR ASSURANCE THAT INFORMATION IS CORRECT. ANY PERSON INTENDING TO RELY UPON THE INFORMATION HEREIN SHOULD VERIFY SAID INFORMATION INDEPENDENTLY.

