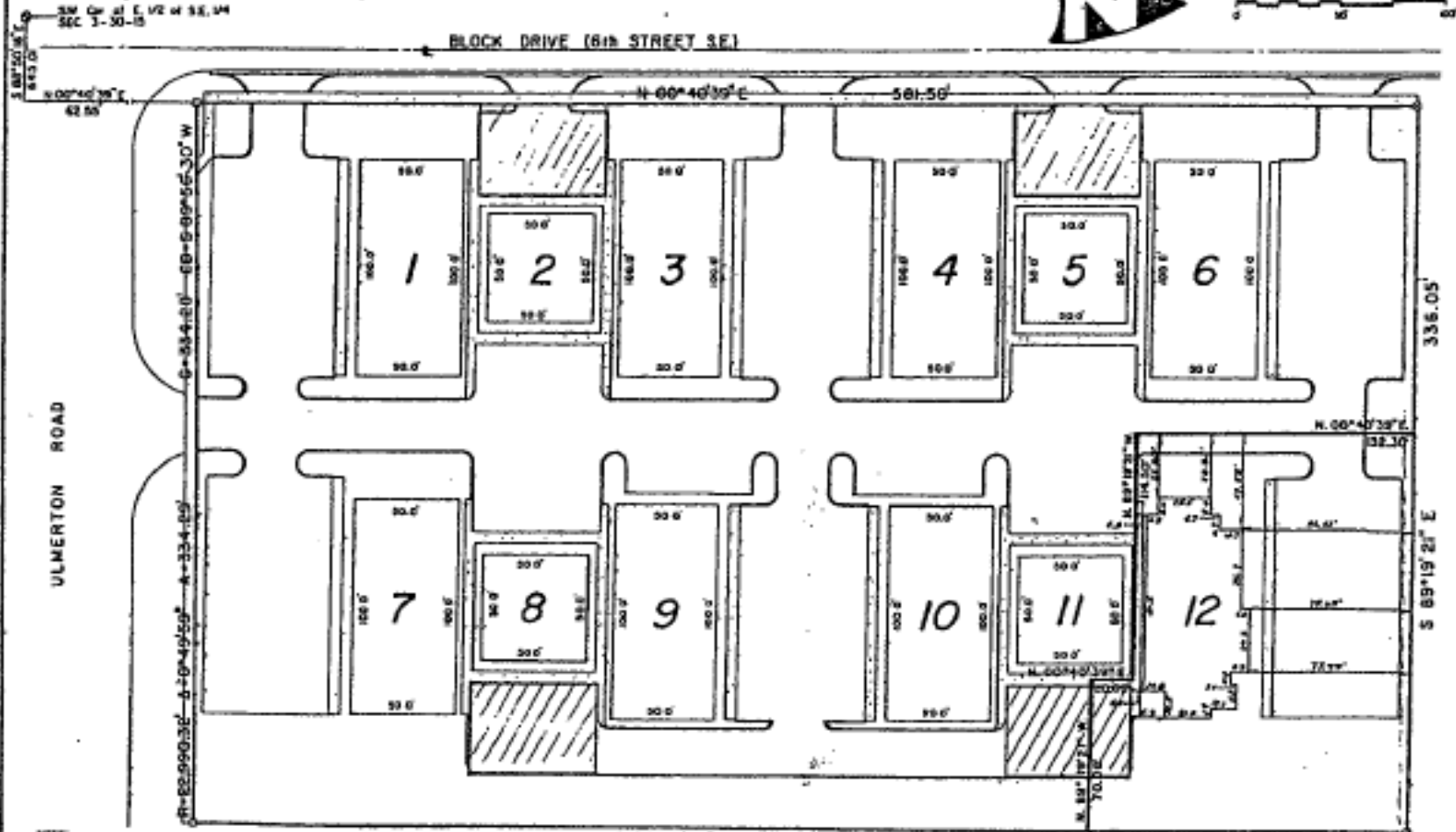
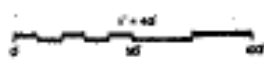


SUGAR CREEK MEDICAL AND PROFESSIONAL CENTER, A CONDOMINIUM - PHASE 12

A PARCEL OF LAND LOCATED IN THE SOUTHEAST 1/4 OF THE SOUTHEAST 1/4 OF SECTION 3, TOWNSHIP 30 SOUTH, RANGE 15 EAST, PINELLAS COUNTY, FLORIDA.



NOTE:
ALL AREAS EXCEPT UNITS AND THOSE AREAS DESIGNATED
"LIMITED COMMON ELEMENTS" ARE COMMON ELEMENTS.

P.O.B. - PHASE 12